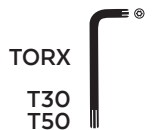


# BMW R1300RT / R1300RS / R1300R '25-

## M O U N T I N G I N S T R U C T I O N S

REF 22716

GUARDABARROS TRASERO / REAR MUDGUARD



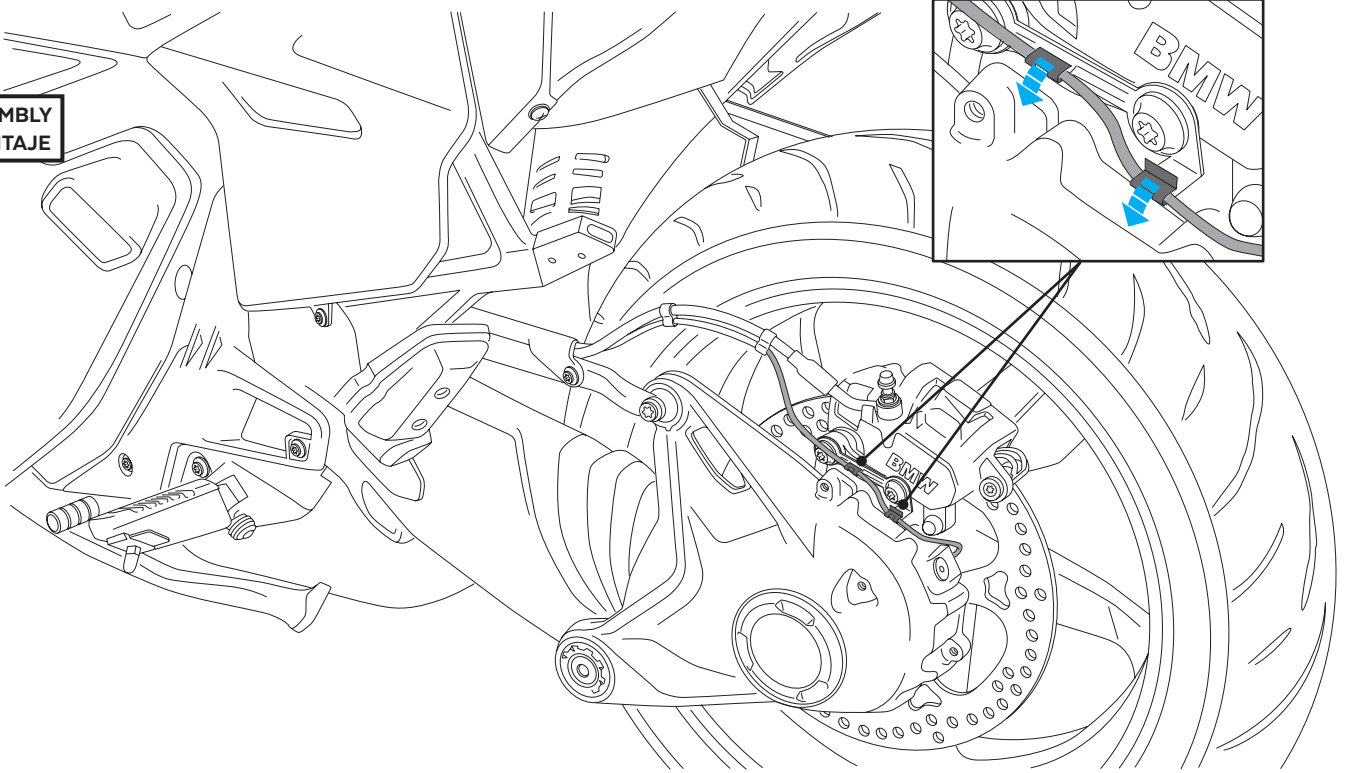
ID	PIEZA/PART	DESCRIPCIÓN	DESCRIPTION	QTY	REF
1		Guardabarros	Rear Mudguard	1	22716 J/C M3
2		Soporte adaptador	Adapter support	1	SOPORIP2--22716
3		Soporte aluminio	Aluminum Support	1	SOPORFUN-21895-
4		Silentblock	Silentblock	3	SILENBGONE--064
5		Tornillo Allen M5x16 ISO 7380	M5x16 ISO 7380 Allen screw	3	TORNI-I7380-493
6		Casquillo con valona M5	M5 Bush with flange	3	CASQUI-----517
7		Arandela Grower DIN127 M6	DIN127 M6 washer	4	ARAND-D127--528
8		Tapón tornillo M5 ISO 7380	M5 ISO 7380 screw cap	3	TAPON-----85
9		Tornillo Allen M10x55 DIN 7984 ( A4 inox)	M10x55 DIN 7984 Allen screw	1	TORNI-D7984-940
10		Tuerca autoblocante M10	M10 lock nut	1	TUEA-D985.8-M10
11		Casquillo Ø10,5 xØ14 x20 mm	Ø10,5 xØ14 x20 mm Arrowhead	1	CASQUII101420299
12		Tornillo Allen M10x35 DIN 7984 (A4 Inox)	M10x35 DIN 7984 (A4 Inox) Allen screw	1	TORNI-D7984-964
13		Tornillo Allen M10x20 DIN 7984 (A4 Inox)	M10x20 DIN 7984 (A4 Inox) Allen screw	1	TORNI-D7984-942
14		Tornillo Allen M6x16 DIN 7 984 (A4 Inox)	M6x16 DIN 7984 ( A4 Inox) Allen screw	1	TORNI-D7984-944
15		Arandela de nylon Ø6,2 x Ø12 x 3mm	Ø6,2 x Ø12 x 3mm Nylon washer	1	ARAND-----749
16		Abrazadera cables negra 100x2,5mm	100x2,5mm cables ties	1	BRIDAN100X2'5-N

# BMW R1300RT / R1300RS / R1300R '25-

INSTRUCCIONES DE MONTAJE - MOUNTING INSTRUCTIONS - MONTAGEANLEITUNG

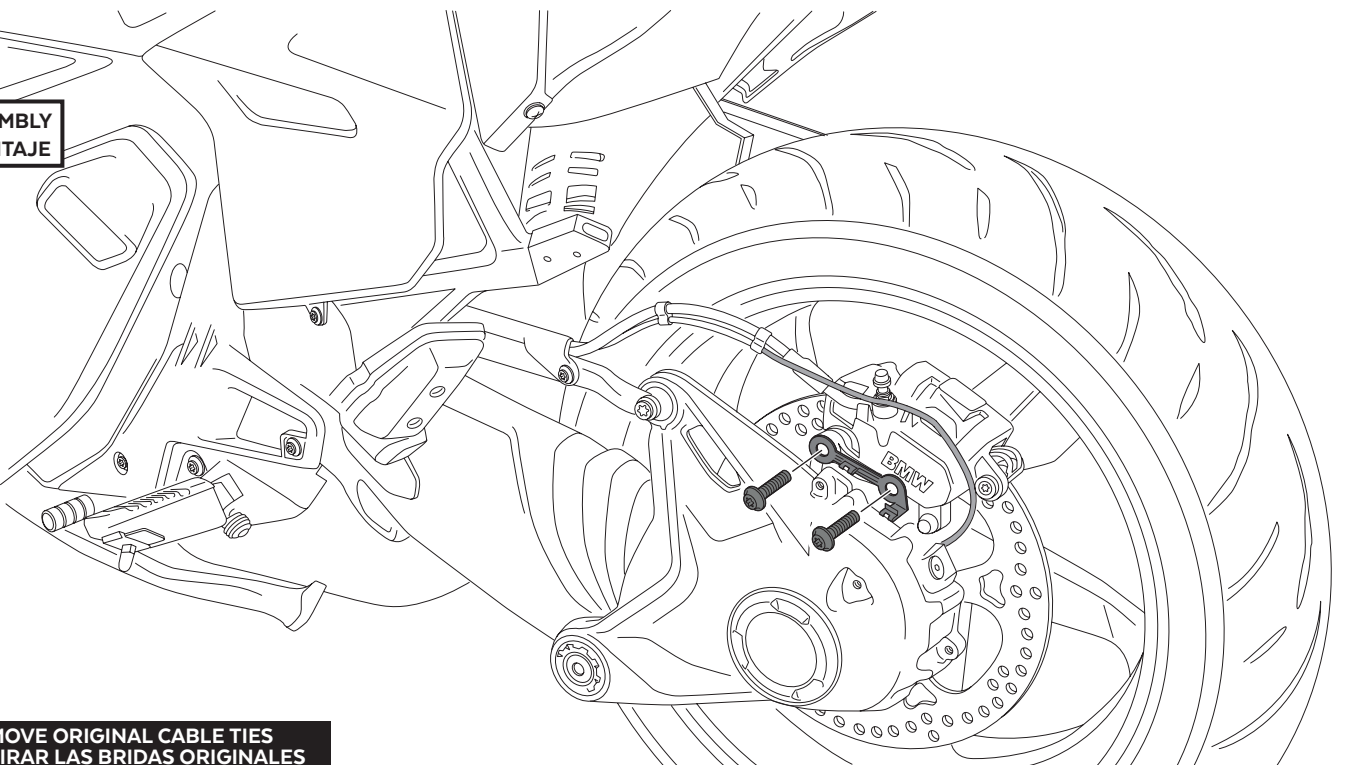
1

DISASSEMBLY  
DESMONTAJE



2

DISASSEMBLY  
DESMONTAJE



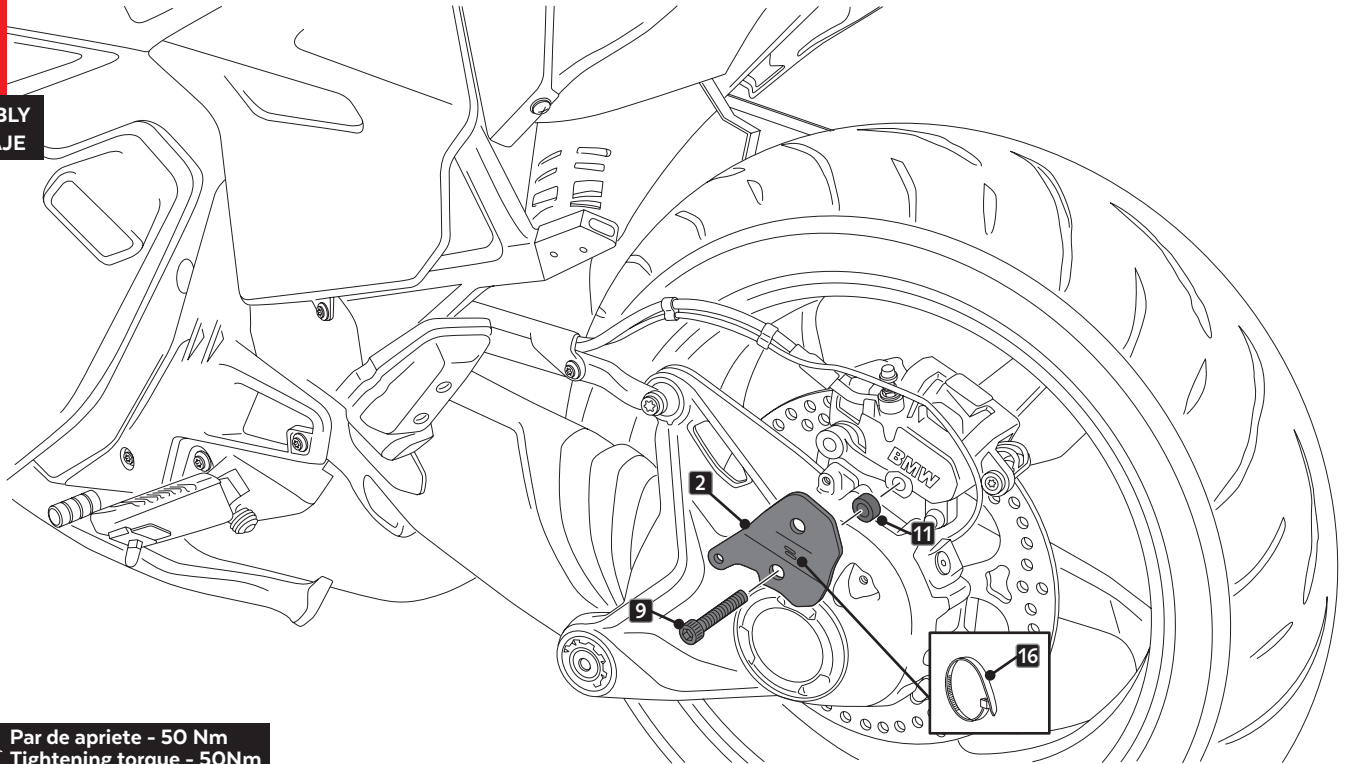
⚠ REMOVE ORIGINAL CABLE TIES  
RETIRAR LAS BRIDAS ORIGINALES

# BMW R1300RT / R1300RS / R1300R '25-

INSTRUCCIONES DE MONTAJE - MOUNTING INSTRUCTIONS - MONTAGEANLEITUNG

**3**

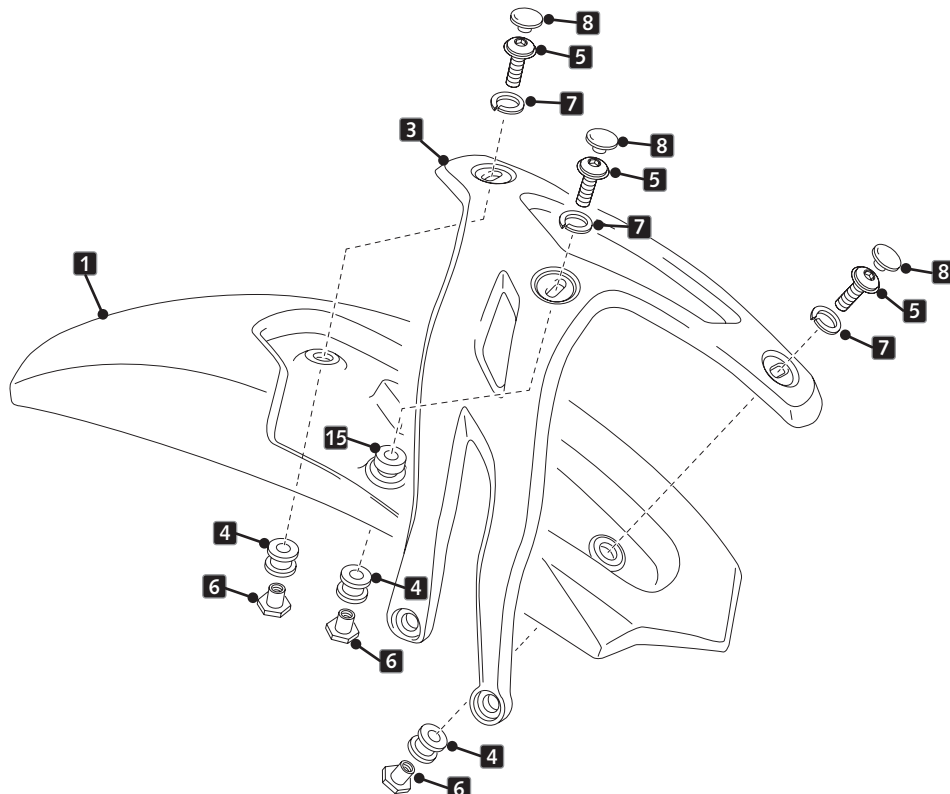
ASSEMBLY  
MONTAJE



**11** Par de apriete - 50 Nm  
Tightening torque - 50Nm

**4**

ASSEMBLY  
MONTAJE



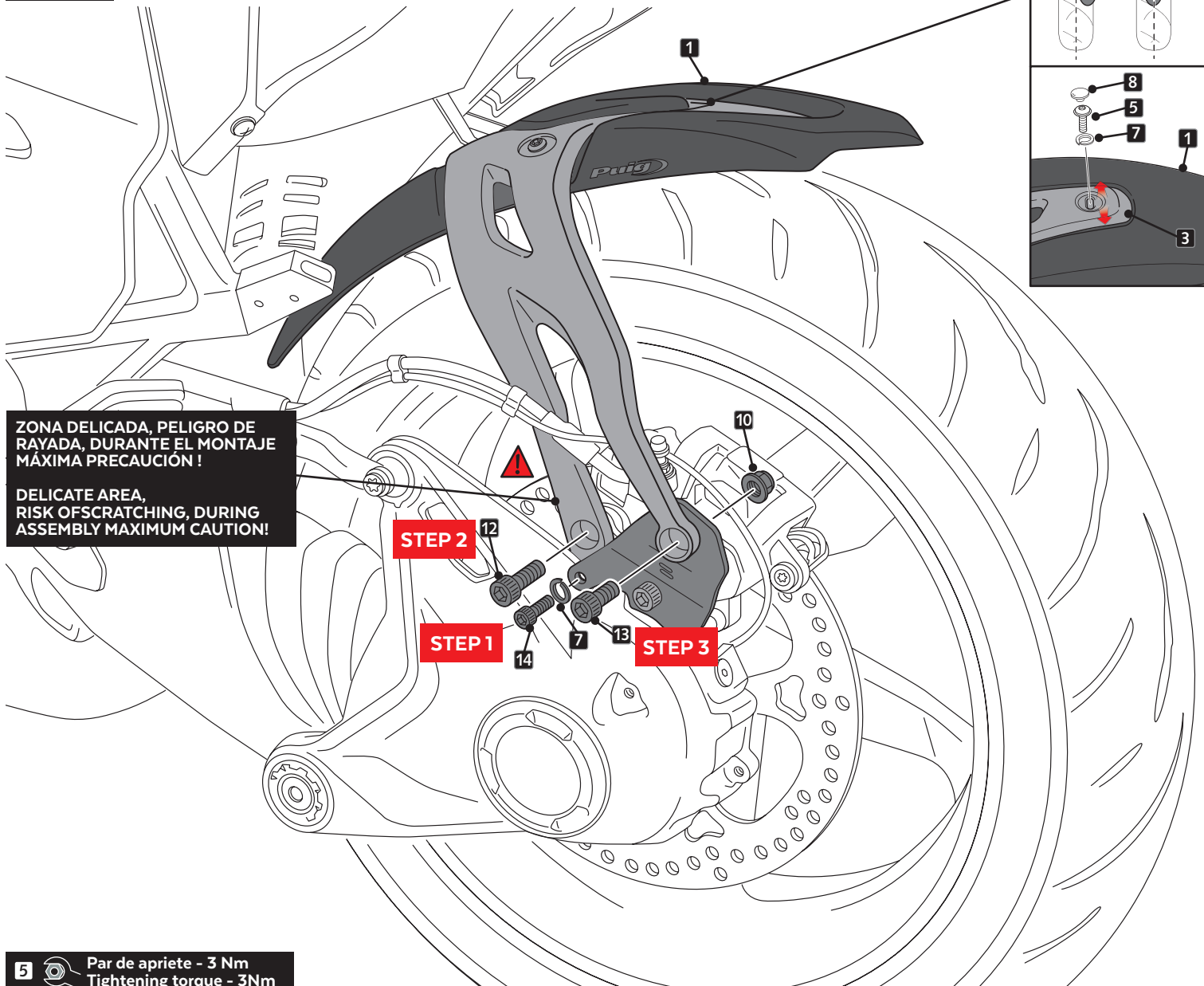
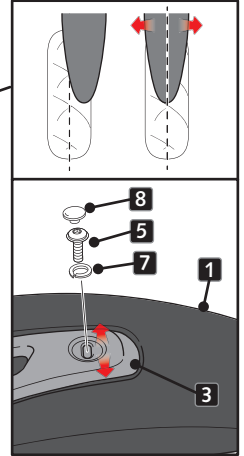
# BMW R1300RT / R1300RS / R1300R '25-

INSTRUCCIONES DE MONTAJE - MOUNTING INSTRUCTIONS - MONTAGEANLEITUNG

**5**

ASSEMBLY  
MONTAJE

**!** ID1 - AJUSTAR POSICIÓN  
ID1 - ADJUST POSITION



ZONA DELICADA, PELIGRO DE RAYADA, DURANTE EL MONTAJE MÁXIMA PRECAUCIÓN!

DELICATE AREA, RISK OF SCRATCHING, DURING ASSEMBLY MAXIMUM CAUTION!

**STEP 2**

**STEP 1**

**STEP 3**

**5** Par de apriete - 3 Nm  
Tightening torque - 3Nm

**12** Par de apriete - 50 Nm  
Tightening torque - 50Nm

**13** Par de apriete - 50 Nm  
Tightening torque - 50Nm

**14** Par de apriete - 8 Nm  
Tightening torque - 8Nm

**!** SE RECOMIENDA REALIZAR EL REAPRIETE DE LA TORNILLERA CADA 1000 Km  
IT IS RECOMMENDED TO CHECK TIGHTENING OF THE BOLTS EVERY 1000 Km

**!** SE RECOMIENDA UTILIZAR LÍQUIDO FIJADOR DE ROSCAS.  
IT IS RECOMMENDED TO USE THREAD LOCKING LIQUID.